



THE  
**BRIAN CLARKE**  
CHURCH OF ENGLAND ACADEMY

# Let your light shine.

---

The Brian Clarke Church  
of England Academy Prospectus





**I'm Allison Ash and am absolutely honoured to be the Headteacher of the Brian Clarke Church of England Academy – a school providing an excellent education for children in a school community that is a true microcosm of our town – aspirational, multi-cultural, multi-faith and multi-talented. This is a brand-new school situated in Oldham town centre and part of the Cranmer Education Multi-Academy Trust.**

Having worked within the Cranmer Education Trust for 17 years I am extremely proud and privileged to have played a part in transforming the life chances of the young people and communities served and I am committed to building on these strong foundations to ensure the Brian Clarke Academy benefits from this legacy.

I am also committed to ensuring our Trust's vision of *luceat lux vestra* – let your light shine (Matthew 5:16) – is at the fore of what we do.

There are no limits to realising potential and at Brian Clarke children are provided with an aspirational curriculum, underpinned by excellent teaching and pastoral provision. Students will leave us with the very best recognised qualifications, fully prepared for the next stage of their educational journey.

Most importantly, through high expectations, nurture and support students will leave us as people we are proud to know, ready to take their place as a positive, lifelong contributor to the wider world.

Crucially, we achieve this together – as a school community of pupils, parents and staff – united in our mission to ensure all children can become everything they are meant to be – to be able to live life in all its fullness (John 10:10).



# A BRAND NEW SECONDARY SCHOOL FOR OLDHAM.

This is an exciting and unique opportunity for your child to start their secondary education in a smaller, highly supportive setting with the benefit of a brand-new state-of-the-art building. We are already a popular choice for families across the town and our founding cohort of 240 Year 7 students started with us in September 2022. We can't wait to welcome our next cohort into the Brian Clarke family in September 2023.



# AMBITIOUS EXCELLENCE COMMUNITY



## Vision & Values

We are **Ambitious** for all our young people, to become everything they can be and are meant to be – to be able to live life in all its fullness (John 10<sup>10</sup>).

We are committed to **Excellence**. The Brian Clarke Church of England Academy strives for excellence for all, with no compromise in expectations for any student or student group, in learning and teaching, outcomes, progress and destinations, pastoral care, welfare, safeguarding and behaviour and the full personal and social, moral, spiritual and cultural development of all in excellent facilities through enriching opportunities.

Building **Community** is central to our vision. The Brian Clarke Church of England Academy is a school that brings together young people of all faiths and none in a multi-cultural, multi-faith and multi-talented school community that is grounded in the school's central, welcoming Christian ethos, enriched by diversity, and strengthened by our inclusive policies and priorities, which enable all young people to achieve.



# Our Patron Crest & Motto

The crest for the school has been designed by Brian Clarke.

The crest is the spinning mill, the iconic symbol of Oldham. We are here because of the mills, which brought together people from across the British Isles and the wider world, to find work and build a future for themselves and their families. The mill symbolizes industry, working hard, working together, and is suffused in light.

LUCEAT  
LUX VESTRA

*LET YOUR LIGHT SHINE - (MATTHEW 5:16)*

Our motto celebrates the light we all have within us, and the light we are all drawn to – the light which enables us to grow, thrive, understand and discern.



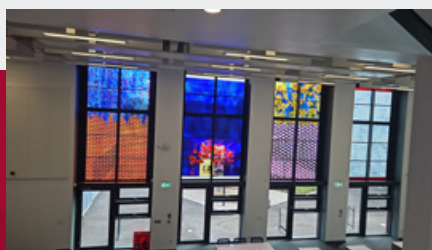
## Our Patron

Our school is named after Brian Clarke, an internationally renowned artist who works primarily in stained glass; an Oldhamer by birth, who retains strong contacts with Oldham and has family here.

We are proud and excited that Brian is the Patron for our school.

Brian's fascination with light has inspired us; and his generosity, as a benefactor for our school, will inspire generations to come – as has the generosity of Thomas Henshaw, the founder of The Blue Coat School.

Our building includes a stained-glass window created by Brian to celebrate learning and the multi-cultural character of the school, shining light into learning and out into the community.





OUR MISSION TO  
ALL CHILDREN OF  
EVERYTHING THEY  
MEANT TO BE





TO ENSURE  
CAN BECOME  
THEY ARE

# We pride ourselves on the quality of teaching and learning pupils experience at Brian Clarke.

## Teaching & Learning

Our curriculum builds cultural capital, gives students access to the best that has been thought, said, written and created in every field of human endeavour, and provides a platform for progression, aspiration and social mobility.

Social, moral, spiritual, and cultural development (SMSC) are golden threads running through provision. The curriculum and teaching strategies are designed to foster resilience, self-worth, social cohesion and integration. There are no ceilings on students' experiences or aspirations. Expectations are the same for all: all routes lead to recognised qualifications.

The breadth of curriculum provision in Years 7-9 enables the large majority of students to take and enjoy the full EBacc at GCSE. This will be supported by an Open Pot of subjects and qualifications that enable every student to succeed and progress.

Students are actively encouraged to be independent thinkers and enquirers and are supported throughout their time with us to develop life skills which will benefit them through their school life and beyond.

## Co-Curricular

Our co-curricular offer is delivered through an extended school day with a Period 6 timetabled every Monday-Thursday. All students take part in 2 co-curricular activities per week.

Enrichment and the co-curriculum are integral to Brian Clarke. We want our students to access the very best the opportunities, so that our young people grow in learning, skills, experience and confidence, and develop their whole self in a fully multi-cultural environment where they interact authentically with a wide range of students, and experts/coaches from the wider community.

Whether their talent is in Sport, Music, Drama, Science, Technology, the Arts or is one yet to be discovered, there are new opportunities to explore at Brian Clarke. All students will take part in two co-curricular activities per week.

All students will also achieve at least one nationally accredited co-curricular qualification during their five years at the school, e.g. the Duke of Edinburgh Award; a CREST Award; national Maths or Computing Challenges, or Young Engineers; National Enterprise Project or National Citizen Scheme - "#iwill"; a grade in a musical instrument/voice; competing at a high level in a school team for sport, debating, public speaking or chess.

### OUR CURRICULUM





## Pastoral Care and Support

Through high expectations, nurture and support students will leave us as people we are proud to know, ready to take their place as a positive, lifelong contributor to the wider world.

Every student has a first port of call, someone to go to, for whom they are priority, the Form Tutor. Practically all teaching staff are Form Tutors who have the frontline responsibility for the personal development of their students, their overall progress in school and their engagement in the whole of the school's offer, so that students develop to the full. Students see their tutor every day in the morning and afternoon.

Tutors and specialist staff also deliver an age appropriate and progressive pastoral curriculum. Coupled with the academic curriculum, the pastoral curriculum educates and supports students to be happy, healthy and safe and able to make informed decisions about their future through a structured careers programme.

All tutors are trained in safeguarding and students' health and wellbeing, including their mental health.

JOINING  
BRIAN CLARKE



### High Expectations

We want our students to be the best they can be and the best they are meant to be. Our families expect the school to promote learning, look after their children and ensure respectful behaviour in a calm, well-ordered, safe and happy community.

To achieve this, The Brian Clarke Church of England Academy promotes and explicitly teaches respectful, courteous behaviour which creates a positive, calm and orderly environment, where teachers can teach without interruption, students can learn without interruption, people are listened to, restorative practice is embedded, and the whole community can flourish.

Our students are our ambassadors, and we expect them to conduct themselves appropriately and wear their uniform with pride at all times. All students are expected to meet the standards set out in our Behaviour and Uniform Policies.

Our Behaviour Policy also sets out how we reward our students when they excel and how we celebrate those achievements as a school community through our termly celebration assemblies.

## The House System

**As well as being allocated to a form group, each form is then allocated to a House.**

The Houses are named after three significant spinning mills in Oldham; Orme, Elm and Heron. The Houses symbolise Oldham's industriousness, working hard and working together.

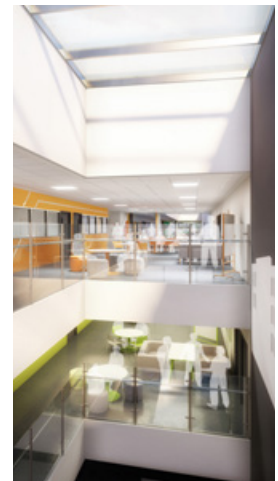
Through the House system students engage in inter-house competitions, take part in charitable endeavours, and have the opportunity to develop leadership responsibilities and skills.



## Achievement for All

**Our aspirations for all apply equally to students with any kind of special educational need or disadvantage.**

Our philosophy is to educate students as far as possible within the standard school provision through quality first teaching. Additional support for students is provided under the direction of the Achievement for All (AfA) department. The AfA department is for all students – be they disabled, more able, dyslexic, dyspraxic, with learning or behavioural difficulties, or for students who just need advice and support. Our experienced team are always there to help and support the students.



## Tracking progress and setting challenging targets

**All students receive appropriate and challenging targets and are supported through their educational journey to achieve these.**

Parents will receive reports three times across the academic year and also have a parents /carer evening to discuss their child's attitudes to learning and progress through the curriculum.



# Joining Brian Clarke

**We understand that are many emotions students (and their parents) go through when joining secondary school. At Brian Clarke we ensure that transition from primary school is as smooth as possible.**

Students benefit from the outstanding pastoral support and care given by all staff. Our team of Form Tutors, support staff and the Head of Year 7 play an integral role in helping everyone to feel part of the school both before you join us and when you get here.

As well as a parent transition evening and a student transition day members of our staff visit everyone who is joining our community in Year 7 to provide support and advice on making the transition to Brian Clarke.

## Admissions

The Brian Clarke Academy is a popular choice. We admit 240 students into year 7 and these places are awarded in line with our Admissions Policy which is available on our website [www.brian-clarke.org](http://www.brian-clarke.org)

Parents will need to have included the Brian Clarke Church of England Academy on of their preferences on the Local Authority's application form.

Please refer to the local authority's website on how to apply for a secondary school place.





# It starts with you.

Brian Clarke is a popular choice for the children of Oldham and surrounding areas. Find out more about by visiting our website.

[www.brian-clarke.org](http://www.brian-clarke.org)

PROUD TO BE PART OF



**Cranmer**  
Education Trust